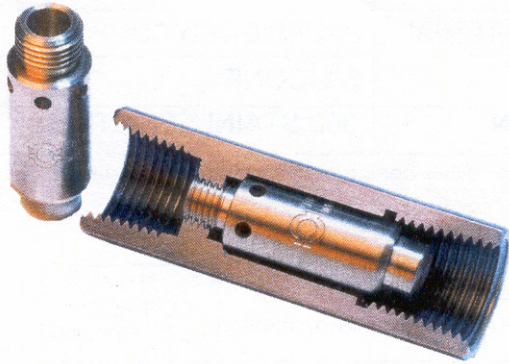




**STEAM**  
Equipments

**THERM-O-TECH INC**

**HIGH TEMP SAMPLE SHUTOFF VALVE**



**APPLICATIONS**

- Steam & Water Sampling Systems
- Automatic Thermostatic Bypass
- Thermostatic Flow Control
- High or Low Temperature Relief
- High Temperature Safety Shutoff
- Thermostatic Drain Valve
- Thermostatic Cooling water Control
- Thermostatic Condensate Drain
- Heat Exchangers

**OPERATION**

This valve is installed in the down stream of sampling systems/heat exchanger. The valve responds only to temperature. Under the normal operation the valve is fully open. If the sample temperature increases within the operating temperature (120°F), The thermal actuator modulates the valve to close the inlet orifice. **The valve automatically opens as the thermal actuator cools.**

The heart of this valve is a solid to liquid phase change thermal actuator. The actuator contains Thermoloid® compound which changes phase from solid to a liquid as the temperature increases. As phase change occurs the volumes of Thermoloid® material changes significantly with the liquid volume greater than the solid volume. Since Thermoloid® is essentially incompressible under normal operating loads & it is sealed into a rigid actuator housing, only piston can move and extend as the volume increases. This motion is used to open or close the valve.

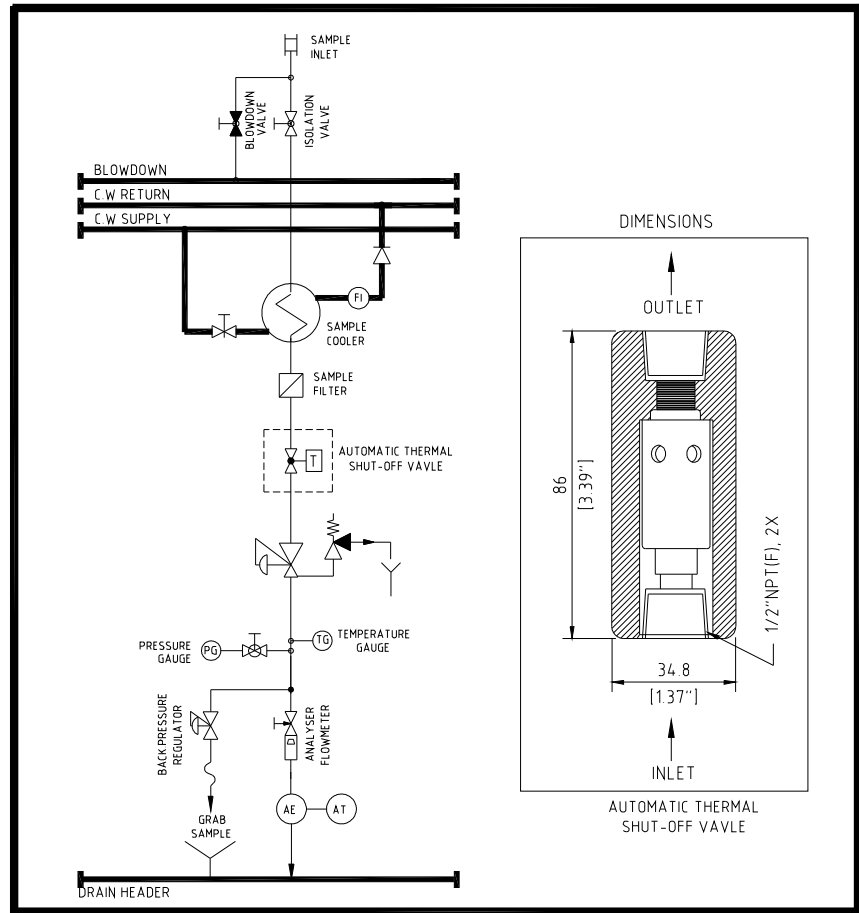
**FEATURES**

- AUTOMATIC:** No reset or Operator involvement required
- NO** outside Power Source required
- Rugged, Compact Design, Easy Installation, Fast response
- Reliable Shut-off :** Ram-type plug design provides tight seal upon shutoff
- Operating temperatures unaffected by pressure
- Wide Choice of Set points
- Corrosion Resistant:** Materials Stainless steel and Teflon to reduce contamination of Sample stream
- Operates in any orientation
- Maintenance free

**SPECIFICATIONS**

| Model No       | Maximum Pressure | Max Body Temp | Sample Connection | Wetted Parts           | Set Point (Deg C)<br>(Open-Close) (Factory set from 10 Deg to 250Deg F) |
|----------------|------------------|---------------|-------------------|------------------------|---|
| ½"-HST-105-115 | <b>3000 PSI</b>  | <b>600°F</b>  | ½"NPT(F)          | <b>Stainless Steel</b> | Std : 105°F - 115°F<br>Other ranges available on request.               |

# DRAWING & TYPICAL INSTALLATION



**THERM-OMEGA-TECH INC**  
353, IVYLAND ROAD  
WARMINSTER,  
PA 18974-2206, USA

**Authorized Representatives in India**  
**STEAM EQUIPMENTS Pvt Ltd**  
Plot No- 44, Tiny Industrial Estate  
Kondhwa Budurk, Pune-411 048  
MAHARASHTRA, INDIA  
☎ : 020-26930908, 2693 0959  
E-mail : [steamequip@vsnl.net](mailto:steamequip@vsnl.net)  
sales@steamequipments.com  
<http://www.steamequipments.com>